



**Morgans**

PROPERTY

148C Rumblingwell, Dunfermline, KY12 9AT

Fixed Price £119,995

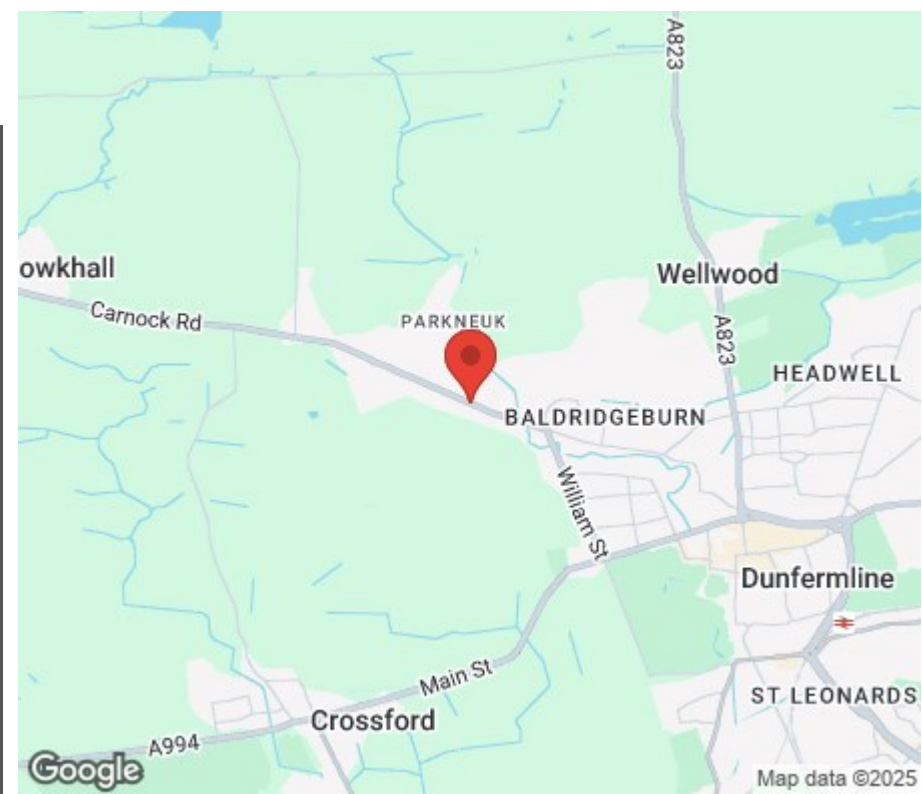






Charming upper apartment with generous living space and two double bedrooms. This traditional home is ideally placed for local schooling and city centre amenities are a short walk away. The accommodation is stylish throughout and briefly comprises communal entrance and stairwell leading to private hallway and storage, living room, kitchen two double bedrooms and bathroom. Various storage throughout. The property further benefits from private gardens to the rear, is double glazed with gas central heating. Early entry is available.





### LOCATION

The ancient capital of Dunfermline won its bid to have official status city in May 2022, as part of the civic honour's competition to celebrate the Queen's platinum jubilee. The City of Dunfermline is of considerable historic interest and is the resting place of King Robert the Bruce. Carnegie's Birthplace museum, the Abbey and Abbot House reflect the historic interest of the city, whilst recent developments have seen Dunfermline move into the modern era with Carnegie Museum and Library. Dunfermline is located approximately five miles from the Forth bridges and is therefore particularly popular with commuters to Edinburgh and many parts of the central belt with easy access to the M90 motorway with its direct links to Edinburgh, Perth and Dundee and across the Kincardine Bridge by way of motorways to Stirling, Glasgow and the West. It benefits from a full range of shops, social and leisure facilities and educational establishments. The local railway stations provide a regular service to Edinburgh with intercity links to other parts of the UK. There are regular and convenient bus services both local and national.

### EXTRAS INC IN SALE / AGENTS NOTE

All floor coverings, blinds (apart from Main bedroom and Living room) and bathroom together with outside shed.

From 1st February 2022, residential properties in Scotland are required by law to have installed a system of inter-linked smoke alarms, carbon monoxide detectors and heat detectors (the "inter-linked system"). No warranty is given to the interlinked system installed in this property.



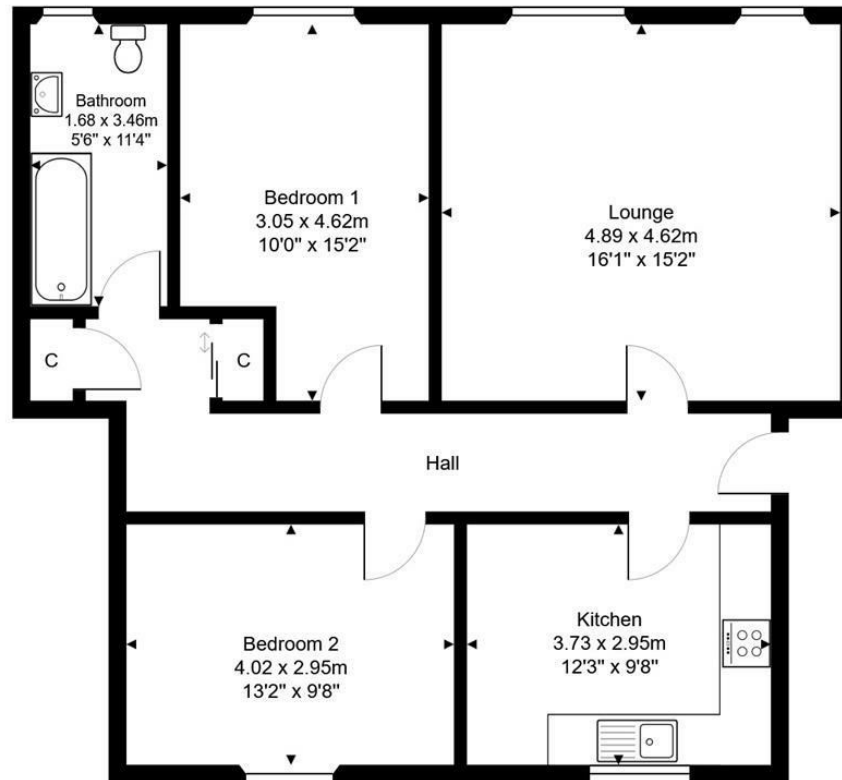
# 148c Rumblingwell, Dunfermline, KY12 9AT



Total Area: 81.3 m<sup>2</sup> ... 875 ft<sup>2</sup>

All measurements are approximate and for display purposes only

**Morgans**  
SOLICITORS



1st Floor

**Morgans**

PROPERTY

SOLICITORS | PROPERTY

33 East Port, Dunfermline, Fife, KY12 7JE

Tel: 01383 620222 Fax: 01383 621213

[www.morganlaw.co.uk](http://www.morganlaw.co.uk)



**espc**

s1homes.com

rightmove

Zoopa.co.uk

onTheMarket.com

naea | propertymark  
PROTECTED

AGENTS NOTE These particulars do not form part of any contract and the statements or plans contained herein are not warranted nor to scale. Approximate measurements have been taken by electronic device at the widest point. Services and appliances have not been tested for efficiency or safety and no warranty is given as to their compliance with any Regulations. No movable items will be included in the sale.